

# Wallingford Quadrangle Bedrock Structure Map

John Sanders

Map

## NOTICE !

This document contains unpublished maps, cross- sections, and related information archived by the State Geological and Natural History Survey of Connecticut as part of the Survey Library Collection.

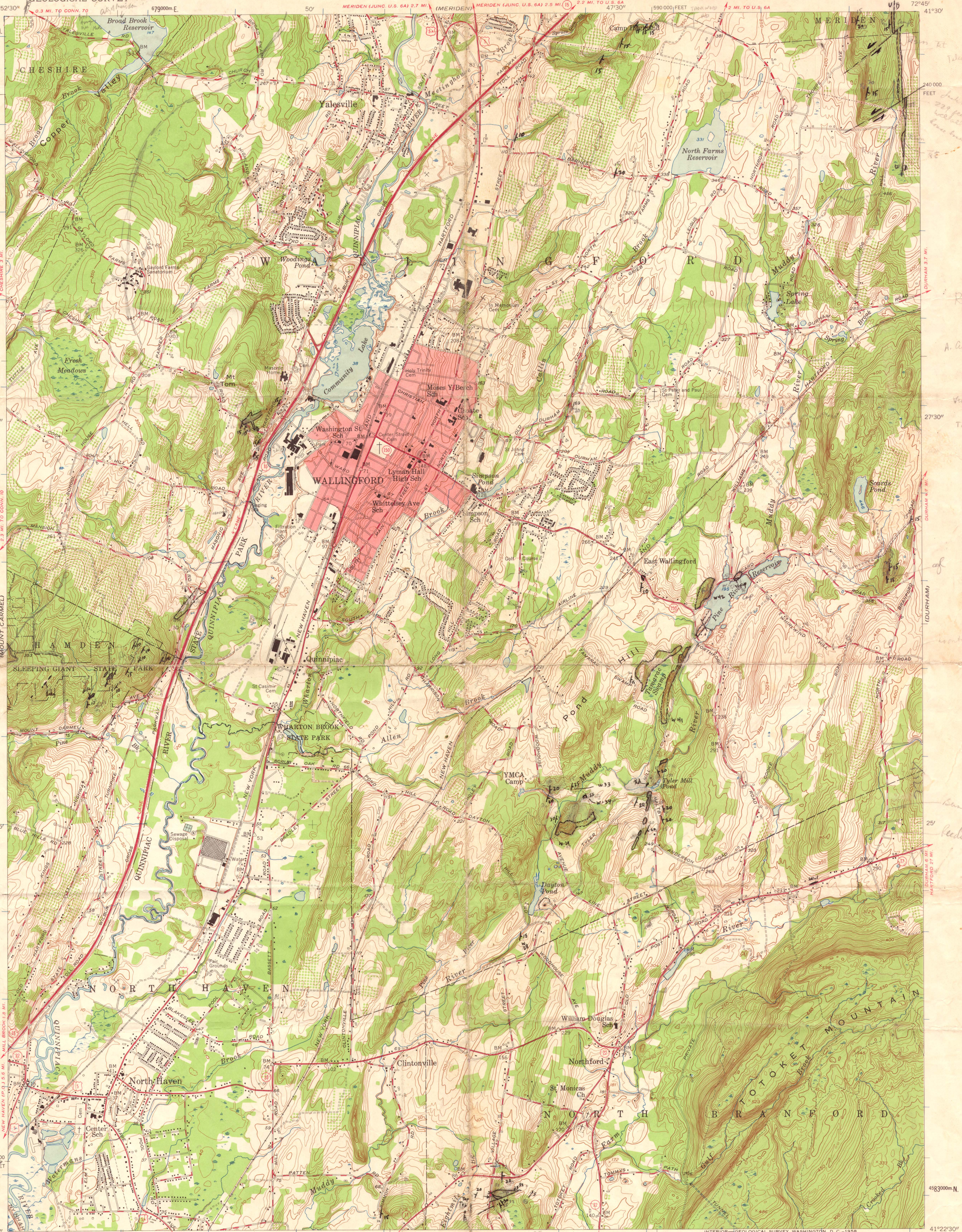
These materials have not been reviewed for accuracy, consistency, or completeness. For many geographic areas, more current information exists, either in published or unpublished form.

For the most part, these materials were developed under research and mapping agreements between the State Geological Survey and individual scientists, academic institutions, or graduate students. Some of these materials have been received by the State Geological Survey as donations. The veracity of the information contained within these documents is the responsibility of the authorship. The State Geological and Natural History Survey of Connecticut, does not promote or endorse this content, nor does the State Survey attest as to its level of accuracy.

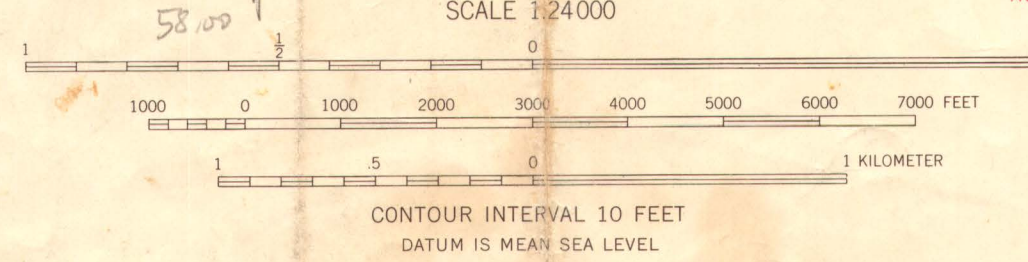
These materials have been preserved under a cooperative agreement between the State Geological Survey and the US Geological Survey as part of the National Geological and Geophysical Data Preservation Program. [www.datapreservation.usgs.gov](http://www.datapreservation.usgs.gov)

These materials are offered in the spirit of open government. Reproduction of these manuscripts was conducted to the highest practical degree, within the parameters of the funding mechanism. Original documents are available for inspection by contacting the [Connecticut State Geologist](#).





Maped, edited, and published by the Geological Survey  
Control by USGS, USCGS, and Connecticut Geodetic Survey  
Topography from aerial photographs by multiplex methods  
Aerial photographs taken 1949. Field check 1954  
Polyconic projection. 1927 North American datum  
10,000-foot grid based on Connecticut coordinate system  
Red tint indicates areas in which only  
landmark buildings are shown  
Unchecked elevations are shown in brown  
1000-meter Universal Transverse Mercator grid ticks,  
zone 18, shown in blue



ROAD CLASSIFICATION

Heavy-duty	Light-duty
Medium-duty	Unimproved dirt
U. S. Route	State Route

Connecticut Geological and Aerial History Survey Library  
79 Elm Street  
Hartford, CT 06106-5127  
(860) 424-6340

m557.46  
wall/m46  
1976  
Map 5

WALLINGFORD, CONN.  
N4122.5-W7245.7.5  
1954

THIS MAP COMPLIES WITH NATIONAL MAP ACCURACY STANDARDS  
FOR SALE BY U. S. GEOLOGICAL SURVEY, WASHINGTON 25, D. C.  
A FOLDER DESCRIBING TOPOGRAPHIC MAPS AND SYMBOLS IS AVAILABLE ON REQUEST

*Handwritten notes:*  
This map belongs to John Saunders  
Yale Geology Dept  
Northern Conn.  
Tolsted corner is W. of part  
229 feet  
above datum  
A. Austin  
43 North Elm St  
Co 9 845  
64 High St  
Torrington Co -  
377 S. Cherry St  
Co 9 8 7 8 1

*Handwritten note:*  
DRAINAGE  
DIVIDE

*Handwritten note:*  
Saw cliff on  
beds gap road

*Handwritten note:*  
1974N



